

# TREEFU TOM


## User's Manual

# Learn & Play Laptop



**vtech**<sup>®</sup>

TREE FU TOM™ BBC & FremantleMedia Ltd.

© 2014 VTech  
Printed in China  
91-00XXXX-000 

**VTech understands that a child's needs and abilities change as they grow and with that in mind we develop our toys to teach and entertain at just the right level...**

## **vtech** Baby

**Toys that will stimulate their interest in different textures, sounds and colours**

### I am...

...responding to colours, sounds and textures

...understanding cause and effect

...learning to touch, reach, grasp, sit-up, crawl and toddle

Birth-36 months



## **Pre-School**

**Interactive toys to develop their imagination and encourage language development**

### I want...

...to get ready for school by starting to learn the alphabet and counting

...my learning to be as fun, easy and exciting as can be

...to show my creativity with drawing and music so my whole brain develops

3-6 years



## **Electronic Learning Computers**

**Cool, aspirational and inspiring computers for curriculum related learning**

### I need...

...challenging activities that can keep pace with my growing mind

...intelligent technology that adapts to my level of learning

...National Curriculum based content to support what I'm learning at school

4-10 years

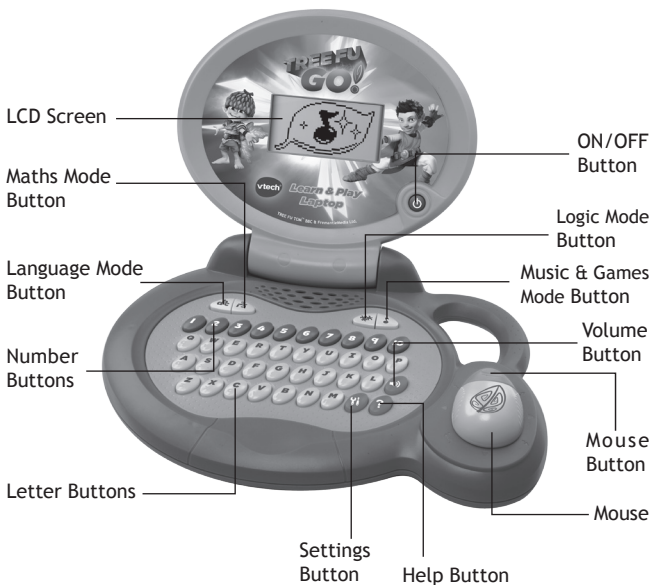


To learn more about this and other VTech® products, visit [www.vtechuk.com](http://www.vtechuk.com)

# INTRODUCTION

Thank you for purchasing the VTech® Tree Fu Tom Learn & Play Laptop.

Join Tom and his friends on a learning adventure! The Tree Fu Tom Learn & Play Laptop introduces age appropriate curriculum in a fun and engaging way. 16 exciting activities include capital & small letters, phonics, vocabulary, maths, logic, music and more! Tree Fu Go!



## ***INCLUDED IN THIS PACKAGE***

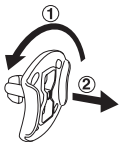
- One VTech® Tree Fu Tom Learn & Play Laptop
- One User's Manual

### **WARNING:**

All packing materials, such as tape, plastic sheets, packaging locks and tags are not part of this toy, and should be discarded for your child's safety.

**Note:** Please keep this user's manual as it contains important information.

### **Unlock the packaging locks:**

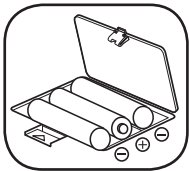


- ① Rotate the packaging lock 90 degrees anti-clockwise.
- ② Pull out the packaging lock.

## ***GETTING STARTED***

### ***BATTERY INSTALLATION***

1. Make sure the unit is OFF.
2. Locate the battery cover on the back of the unit.
3. Install 3 new “AA” Size (AM-3/LR6) batteries following the diagram inside the battery box. (The use of new alkaline batteries is recommended for maximum performance.)
4. Replace the battery cover.



## **BATTERY NOTICE**

- Use new alkaline batteries for maximum performance.
- Use only batteries of the same or equivalent type as recommended.
- Do not mix different types of batteries: alkaline, standard (carbonzinc) or rechargeable (Ni-Cd, Ni-MH), or new and used batteries.
- Do not use damaged batteries.
- Insert batteries with the correct polarity.
- Do not short-circuit the battery terminals.
- Remove exhausted batteries from the toy.
- Remove batteries during long periods of non-use.
- Do not dispose of batteries in fire.
- Do not charge non-rechargeable batteries.
- Remove rechargeable batteries from the toy before charging.
- Rechargeable batteries are only to be charged under adult supervision.

## **Disposal of batteries and product**



The crossed-out wheeie bin symbols on products and batteries, or on their respective packaging, indicates they must not be disposed of in domestic waste as they contain substances that can be damaging to the environment and human health.



The chemical symbols Hg, Cd or Pb, where marked, indicate that the battery contains more than the specified value of mercury (Hg), cadmium (Cd) or lead (Pb) set out in Battery Directive (2006/66/EC).

The solid bar indicates that the product was placed on the market after 13th August, 2005.

Help protect the environment by disposing of your product or batteries responsibly.

For more information, please visit:

[www.recycle-more.co.uk](http://www.recycle-more.co.uk)

[www.recyclenow.com](http://www.recyclenow.com)

# PRODUCT FEATURES

## 1. ON/OFF BUTTON

Press the ON/OFF BUTTON to turn the unit ON and press it again to turn the unit OFF.

## 2. VOLUME BUTTON

Press the VOLUME BUTTON to adjust the volume. Move the MOUSE left and right to choose then press the MOUSE BUTTON to confirm.

## 3. SETTINGS BUTTON

Press the SETTINGS BUTTON to adjust the screen contrast or to turn the background music on or off. Move the MOUSE up and down to select which item to adjust then move the MOUSE left and right to make adjustments. Press the MOUSE BUTTON to confirm.

## 4. HELP BUTTON

Press the HELP BUTTON to hear an instruction or question repeated or to see a hint.

## 5. LANGUAGE MODE BUTTON

Press the LANGUAGE MODE BUTTON to play language games. There are 4 games in this mode. Move the MOUSE left and right to choose a game. Press the MOUSE BUTTON to confirm your choice.

## 6. MATHS MODE BUTTON

Press the MATHS MODE BUTTON to play maths games. There are 4 games in this mode. Move the MOUSE left and right to choose a game. Press the MOUSE BUTTON to confirm your choice.

## 7. LOGIC MODE BUTTON



Press the **LOGIC MODE BUTTON** to play logic games. There are 4 games in this mode. Move the **MOUSE** left and right to choose a game. Press the **MOUSE BUTTON** to confirm your choice.

## 8. MUSIC & GAMES MODE BUTTON



Press the **MUSIC & GAMES BUTTON** to enjoy some music or play games. There are 4 games in this mode. Move the **MOUSE** left and right to choose a game. Press the **MOUSE BUTTON** to confirm your choice.

## 9. MOUSE

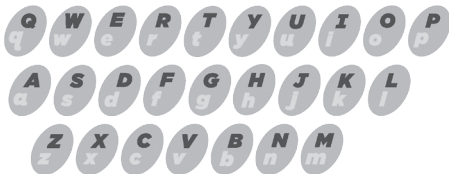
Use the 8-direction **MOUSE** to move or to make a selection in a menu or game.

## 10. MOUSE BUTTON

Press the **MOUSE BUTTON** to confirm your choice.



## 11. LETTER BUTTONS



Press the **LETTER BUTTONS** to learn letters or to answer letter related questions.

## **12. NUMBER BUTTONS**



Press the **NUMBER BUTTONS** to learn numbers or to answer number related questions.

## **13. AUTOMATIC SHUT-OFF**

To preserve battery life the unit will automatically turn off after several minutes without input. The unit can be turned on again by pressing the **ON/OFF BUTTON**. The unit will also automatically turn off when the batteries are very low. A warning will be displayed on the screen as a reminder to change the batteries.

# **ACTIVITIES**

The VTech® Tree Fu Tom Learn & Play Laptop offers a total of 16 fun activities to play.

## **LANGUAGE MODE**

### **01. Letter Sound Squizzle**

Help Tom catch the squizzle to see what letter sound is stuck on it. Use the **MOUSE** and **MOUSE BUTTON** or press the **LETTER BUTTONS** to catch the squizzle and learn the letters and letter sounds.

### **02. Holopax Objects**

Explore and learn different things in Treetoplis with the Holopax. Press a **LETTER BUTTON** to learn words and their beginning letters or move the **MOUSE** to learn directions.



### **03. Capital & Small Letters**

Let's explore the magical book with Twigs and Tom! Press a **LETTER BUTTON** or use the **MOUSE** and **MOUSE BUTTON** to learn capital and small letters.

### **04. Letter Hunt**

Help Squirmtum guess what letter is on the wall! Use the **MOUSE** to move Flicker to find the letter then press a **LETTER BUTTON** to answer.

## **MATHS MODE**

### **05. Number Spell**

Twigs needs some help with his number spell. Press the **NUMBER BUTTONS** to learn numbers and count the corresponding number of objects.

### **06. Treefle Shapes**

Squirmtum is trying to find some treefle shapes in the dark. Use the **MOUSE** to move the light then press the **MOUSE BUTTON** to collect the treefles when you see them. Learn different shapes with Squirmtum.

### **07. Workshop Tidy**

Zigzoo is too busy to tidy up his workshop! Join Tom to help by listening carefully. Use the **MOUSE** to guide the robot to put the items in the correct places.

### **08. Lunch Counting**

Tom and his friends are sharing lunch. They need some help to count how many items they have altogether. Count the objects then press the **NUMBER BUTTONS** to answer.

## **LOGIC MODE**

### **09. Zigzoo's Invention**

You will have 5 seconds to remember what Zigzoo needs for his invention. Remember the item or items then pick them out from the options shown using the **MOUSE** and **MOUSE BUTTON**. There are 3 levels in this game. Level 1 = 1 object, level 2 = 2 objects, level 3 = 3 objects. Level up after 3 correct answers.

### **10. Garden Sorting**

Rickety's garden was such a mess after a Treequake! Sort the items by putting them into the corresponding boxes. Use the **MOUSE** to move the boxes left and right so that the objects drop in to the correct ones.

### **11. Magic Card Mix Up**

The Mushas have mixed up Treetog's magic cards! Join Tom and Twigs to help repair them. Use the **MOUSE** and **MOUSE BUTTON** to select the pieces and switch them. You have one minute to put the pieces in the correct places.

### **12. Cavern Clearing**

Tom needs your help to clear the cavern. Use the **MOUSE** to help Tom move the rock to the star and escape! This task needs to be finished within 90 seconds!

## **MUSIC & GAMES MODE**

### **13. Photo Album**

Use the **MOUSE** and **MOUSE BUTTON** to choose a character and learn something about them!

### **14. Big World Magic**

It's time for Big World Magic! Watch carefully and use the **MOUSE** to follow the arrows as they drop in to the box. Tom will move in the corresponding direction when you answer correctly.

### **15. Party Time**

It's party time! Join Tom and his friends for a dance. Press a **NUMBER BUTTON** or use the **MOUSE** and **MOUSE BUTTON** to choose a song.

### **16. Branch Ranch Planting**

We need to help Ariela plant some seeds. Use the **MOUSE** and **MOUSE BUTTON** to play and watch the different kinds of plants grow each time!

## **CARE & MAINTENANCE**

1. Keep the unit clean by wiping it with a slightly damp cloth.
2. Keep the unit out of direct sunlight and away from any direct heat sources.
3. Remove the batteries when the unit is not in use for an extended period of time.
4. Do not drop the unit on a hard surface and do not expose the unit to excess moisture or water.

## **TROUBLESHOOTING**

If for some reason the program/activity stops working or malfunctions, then please follow these steps:

1. Turn the unit OFF.
2. Interrupt the power supply by removing the batteries.
3. Let the unit stand for a few minutes, then replace the batteries.

4. Turn the unit back ON. The unit should now be ready to play again.
5. If the product still does not work, replace with an entire set of new batteries.

If the problem persists, please call our Consumer Services Department on 01235 546810 (from UK) or +44 1235 546810 (outside UK) and a service representative will be happy to help you.

## **TECHNICAL SUPPORT**

If you have a problem that cannot be solved by using this manual, we encourage you to visit us online or contact our Consumer Services Department with any problems and/or suggestions that you might have. A support representative will be happy to assist you. Before requesting support, please be ready to provide or include the information below:

- The name of your product or model number (the model number is typically located on the back or bottom of your product).
- The actual problem you are experiencing.
- The actions you took right before the problem started.

**Internet:** [www.vtechuk.com](http://www.vtechuk.com)

**Phone:** 01235 546810 (from UK), or +44 1235 546810 (outside UK)

### **IMPORTANT NOTE:**

Creating and developing VTech® preschool learning products is accompanied by a responsibility that we at VTech® take very seriously. We make every effort to ensure the accuracy of the information, which forms the value of our products. However, errors sometimes can occur. It is important for you to know that we stand behind our products and encourage you to call our Consumer Services Department on 01235 546810 (from UK), or +44 1235 546810 (outside UK) with any problems and/or suggestions that you might have. A service representative will be happy to help you.



## PRODUCT WARRANTY



Thank you for choosing this quality product from VTech. We hope it will bring many hours of entertainment, imaginative play and learning.

1. The product detailed above is covered by a one year warranty from the date of purchase, against any defects in materials or workmanship.
2. The product may be returned to the place of purchase. Alternatively the product can be returned to VTech Electronics Europe plc (see address below), with proof of purchase, without proof of purchase no replacement will be provided.
3. VTech Electronics Europe plc will examine the product and if it is found to be defective due to faulty materials or workmanship, will replace the product at their discretion.
4. If the product covered by this warranty is damaged due to misuse, modification or unauthorised repair, or because of faulty batteries, battery discharge or incorrect electrical connections, then this warranty becomes void.
5. This warranty is personal to the original purchaser and is not transferable.
6. Breakages to the LCD screen are not covered by the warranty.
7. Returns to VTech Electronics Europe plc should include a cheque or postal order for £1.50 towards the cost of return postage and packaging.
8. Products returned to VTech Electronics Europe plc, should be addressed as follows and packed carefully to avoid damage in transit (Please do not include batteries or adaptor).  
Please include details of the fault together with your name and address.

VTech Electronics Europe plc, c/o Tablogix Limited, 200 Milton Park, Abingdon, Oxon OX14 4TA

**THIS WARRANTY IS OFFERED AS AN EXTRA BENEFIT AND DOES NOT AFFECT CONSUMERS' STATUTORY RIGHTS.**

This warranty is valid for the UK and Eire only. For products purchased outside the UK and Eire, please contact your local distributor or place of purchase.

